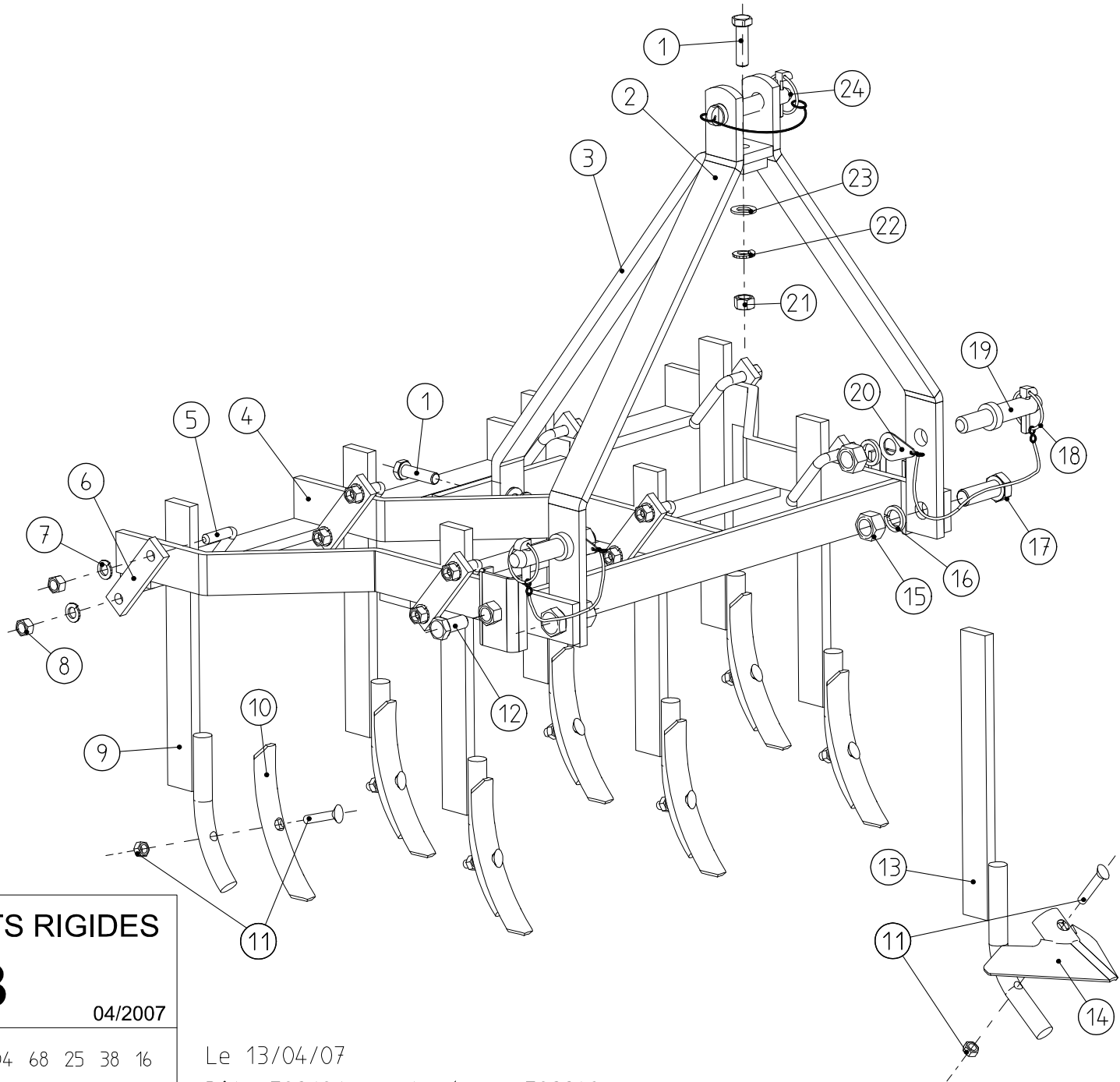


| REP. | NB. | DESIGNATION             | Réf.    | Réf.    |
|------|-----|-------------------------|---------|---------|
|      |     |                         | CM7R    | CM7B    |
| 23   | 2   | Rondelle plate Ø14      | 9908014 | 9908014 |
| 22   | 2   | Rondelle grower Ø14     | 9908072 | 9908072 |
| 21   | 2   | Ecrou H14               | 9900216 | 9900216 |
| 20   | 2   | Patte de B.I.           | 185019  | 185019  |
| 19   | 2   | Axe B.I. Complet        | 080307  | 080307  |
| 18   | 2   | Goup. Anneau Ø10 + Lien | 075568  | 075568  |
| 17   | 2   | Vis H20 x 55/55 Cl.8.8  | 9962057 | 9962057 |
| 16   | 2   | Rondelle Grower Ø20     | 9908067 | 9908067 |
| 15   | 2   | Ecrou H20               | 9900225 | 9900225 |
| 14   | 7   | Soc Cœur Nu             |         | 923006  |
| 13   | 7   | Support Soc Bineur      |         | 582193  |
| 12   | 2   | Vis H16 x30/30          | 9961915 | 9961915 |
| 11   | 7   | Boulon CC 10x40         | 923010  | 923010  |
| 10   | 7   | Soc nu                  | 910033  |         |
| 9    | 7   | Support Soc Rigide      | 582192  |         |
| 8    | 14  | Ecrou H12               | 9900215 | 9900215 |
| 7    | 14  | Rondelle grower Ø12     | 9908069 | 9908069 |
| 6    | 7   | Plat de bride           | 218006  | 218006  |
| 5    | 7   | Bride                   | 181072  | 181072  |
| 4    | 1   | Bati CM7R/B             | 582249  | 582249  |
| 3    | 1   | Renfort de potence      | 080834  | 080834  |
| 2    | 1   | Potence                 | 081051  | 081051  |
| 1    | 2   | Vis H14 x 50/34         | 9962031 | 9962031 |
| REP. | NB. | DESIGNATION             | Réf.    | Réf.    |



## CULTI & BINEUSE MICRO 7 DENTS RIGIDES CM7R & CM7B

04/2007

**MAJAR**

RTE MONTREAL  
11850 CARCASSONNE

Tel. 04 68 25 38 16

Fax. 04 68 72 51 61

Le 13/04/07

Bâti 582191 remplacé par 582249